

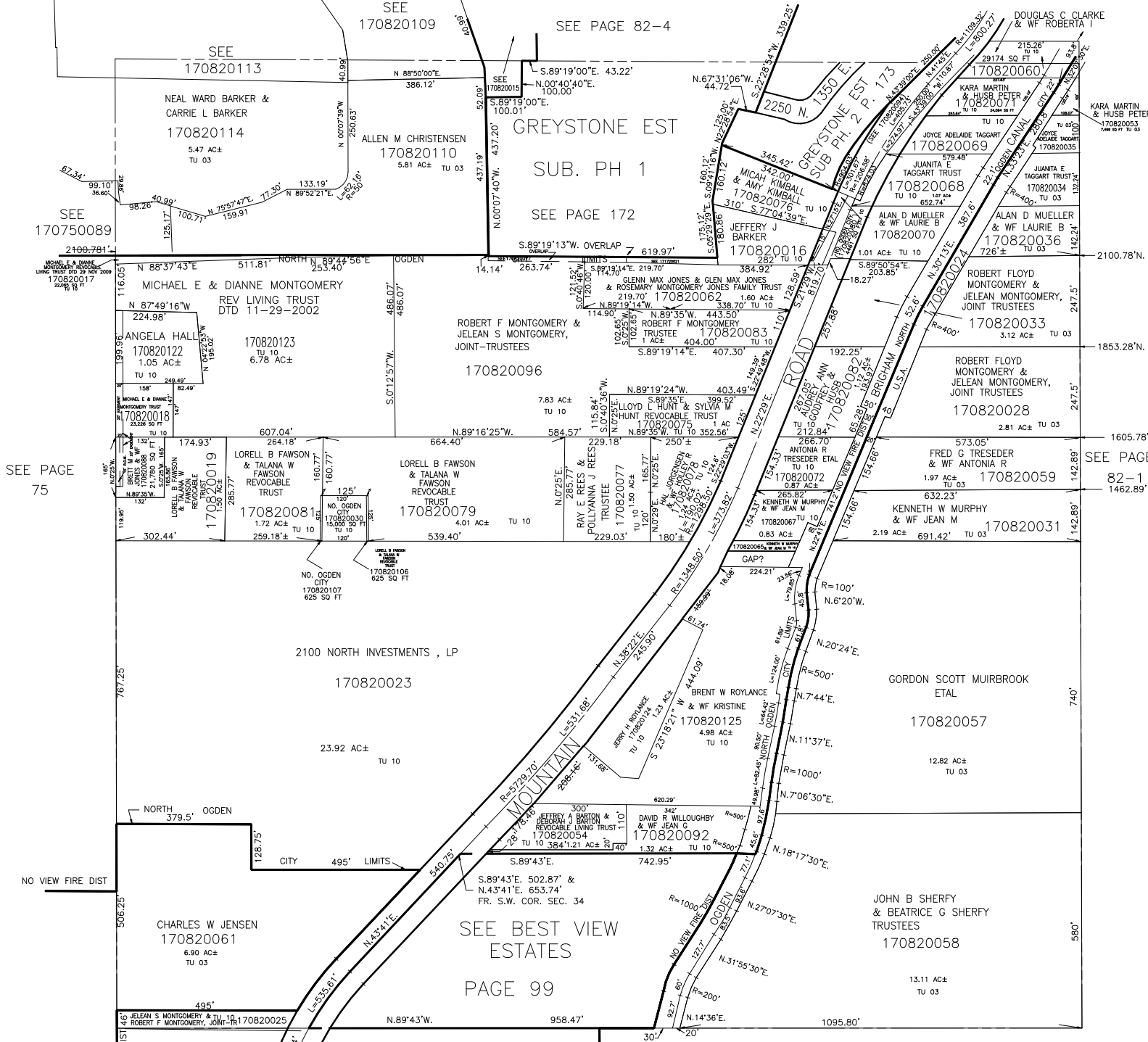
S.W. 1/4 OF SECTION 34, T.7N., R.1W., S.L.B. & M.

IN NORTH OGDEN CITY & WEBER COUNTY

TAXING UNIT: 03, 10

SCALE 1" = 200'

ALSO SEE PAGE 82-4



SEE 170820109

SEE 170820113

SEE 170820114

SEE 170750089

SEE 2100-781

SEE PAGE 75

17

SEE PAGE 82-4

GREYSTONE EST SUB. PH 1

SEE PAGE 172

SEE BEST VIEW ESTATES PAGE 99

SEE BOOK 11, PAGE 2

NOTE: ALL BEARINGS & LENGTHS ARE AT THE ϵ

SEE PAGE 82-1